

## CONTENTS

Headteacher's Welcome	1
Introduction	3-4
Careers	7
Support & Guidance	9
Timeline of Events	9
Next Steps	10
Core Subjects	12-18
• GCSE English Language	
• GCSE English Literature	
• GCSE Mathematics	
• GCSE Science	
• Physical Education	
• Personal Development	
Option Block 1	19-21
• GCSE Geography	
• GCSE History	
Option Block 2	22-30
• GCSE French	
• GCSE Spanish	
• GCSE Computer Science	
• GCSE Philosophy & Ethics (RE)	
• GCSE Music	
• GCSE Drama	
• Vocational Award - Hospitality & Catering	
• Cambridge National - Sports Studies	
Option Block 3	31-39
• GCSE Triple Science	
• GCSE Physical Education	
• GCSE Geography	
• GCSE Art, Craft & Design	
• BTEC Health & Social Care	
• GCSE Media Studies	
• Cambridge National - Engineering Design	
• GCSE Textiles	
<i>(Please note that subjects will need to be chosen in option blocks)</i>	
Notes	40

# HEADTEACHER'S WELCOME



Year after year we enjoy celebrating GCSE success with our students as they secure the grades to move onto the destinations of their choice at the end of Year 11. This milestone always fills me with great pride, as we see the young people we have watched grow and learn over the last five years follow their dreams.

I know how far away this milestone may seem to students reading this guide today, however, in reality, the

next two years will go incredibly fast and it is important that you spend this time studying courses that are right for you and your future aspirations.

Year 10 and 11 are an important and demanding stage in a student's education, with GCSEs playing a vital role in achieving entry to the Sixth Form, college or apprenticeships, securing future industry roles and entering Higher Education.

At The Hinckley School we put students first and are committed to providing an expertly crafted GCSE curriculum which, alongside tailored careers guidance and expansive exam preparation, surrounds our students with support and removes barriers, enabling our students to reach their full potential.

**“ WE HAVE THE HIGHEST ASPIRATIONS FOR OUR STUDENTS AND ARE COMMITTED TO BUILDING BRIGHTER FUTURES FOR ALL. ”**

We have worked collaboratively with our colleagues across The Futures Trust to ensure that our GCSE curriculum for 2024 offers a broad range of opportunities and delivers high quality teaching and learning, with additional investment in staff development and facilities to allow us to confidently set our students up for success.

Within this Options Guide you will be able to discover the wealth of courses available to our students at Key Stage 4, with STEM, EBacc and Core subjects clearly marked to help your decision making.

Our specialist team are here to support you every step of the way and we look forward to celebrating your GCSE success at the end of Year 11.

Wishing you all the best with your decision,

**Lisa Hickman, Headteacher**



The Hinckley  
SCHOOL

---

*AN EXPERTLY  
CRAFTED CURRICULUM  
DESIGNED TO  
**CHALLENGE, INSPIRE**  
AND **CAPTIVATE**  
THE MINDS OF OUR  
FUTURE LEADERS*

---





# INTRODUCTION

The purpose of this guide is to help students to select the courses they wish to study in Year 10 and 11. Making this decision is not an easy one and it is important that students select courses where they show real potential and interest, as this affects both their enjoyment and academic outcomes. Every grade matters to build brighter futures.

## Curriculum Structure

The curriculum contains both core subjects, which are compulsory for all students, and optional subjects. All core subjects and **three** optional subjects are combined to form a students’ individual programme of study.

**Core Subjects** - The high quality of teaching delivered in our core subjects creates a strong foundation of knowledge, ensuring students acquire essential skills in English, Mathematics and Science. Physical Education and Personal Development (both non-assessed) ensure that students develop character, relationships, teamwork, and essential life skills.

**Optional Subjects** - Alongside core subjects, optional subjects allow an avenue for students to study courses which reflect their individual abilities, interests and future aspirations. **Students select three option subjects.** Our optional course offer is reviewed annually as part of our ongoing commitment to providing outstanding opportunities for all and our Senior Leadership Team have used their extensive expertise, alongside colleagues from The Futures Trust, to craft a GCSE provision which offers broad range, outstanding opportunities and inspiring content.

<b>Core:</b> English Language English Literature Mathematics Science Physical Education Personal Development	
<b>Option Block 1:</b> Geography History	
<b>Option Block 2:</b> French Spanish Computer Science Ethics & Philosophy (RE) Music Drama Hospitality & Catering Sports Studies	<b>Option Block 3:</b> Triple Science PE Geography Art, Craft & Design Health & Social Care Media Studies Engineering Design Textiles

## Course Types

Some subjects contain an element of Non Examined Assessment (previously known as coursework) which enables students to produce work of high quality without examination time pressures, as well as the freedom to conduct in depth exploratory research. All courses contain an element of examination, ensuring students develop the ability to focus under pressure, develop revision practices and promote knowledge retrieval. All students have different approaches to learning, so understanding the assessment breakdown of a course is important when it comes to decision making.

### ***BTEC / Technical Award / OCR Nationals***

These are vocational qualifications in which students can gain either a Level 1 or Level 2 qualification. These course types are assessed via coursework (maximum of 80%) and external assessment (minimum of 20%) set by the exam boards. They will be graded as follows:

Level 1 = Pass / Level 2 = Pass, Merit, Distinction, Distinction Star

Students can only submit each piece of work once, and every deadline must be met to pass the course. The BTEC qualifications we offer are at Level 2.

### ***GCSE***

Assessed by examinations and, in some subjects, an element of coursework. All examinations will be taken at the end of the course. Students are awarded grades 9-1.

### ***Non-Examined Assessment (NEA)***

These are 'tasks' set by the exam board, marked by teachers and then moderated by the exam board. They assess skills such as research, processing, analysing and evaluating information and report writing.

**Please see our subject pages for specific assessment information.**

## English Baccalaureate (EBacc)

The English Baccalaureate (EBacc) is a set of subjects at GCSE that helps to keep young people's options open for further study and future careers.

The EBacc is:

- **English**
- **Mathematics**
- **The Sciences** (*can include Double Science*)
- **Geography or History**
- **French or Spanish**

The EBacc is a nationally accepted suite of qualifications. It serves as a benchmark for universities to check that applicants have a broad and solid academic foundation on which to build. Although studying the complete EBacc combination is optional for all students, we do strongly recommend this route as it keeps all Further (Sixth Form) and Higher (University) Education pathways open for students as they seek to maximise their potential and aspirations. *EBacc subjects are all clearly marked within this booklet.*

### **STEM**

STEM subjects are subjects within the fields of Science, Technology, Engineering, Art and Mathematics. Careers within STEM are wide ranging and ever evolving and there is a national drive to promote STEM subjects as there is a great demand for employment in these sectors. Our new STEM building underlines our commitment to this sector, and we regularly host STEM enrichment and career events to develop students' understanding of the opportunities available.

*STEM subjects are all clearly marked within this booklet.*

***"Understanding the assessment breakdown is important when it comes to decision making"***





WHERE WILL YOUR  
JOURNEY TAKE YOU?



The Hinckley  
SCHOOL

---

# *HAVE THE CONFIDENCE TO CHASE YOUR OWN DREAM*

---

Building life long friendships is an important part of school life. However, when it comes to selecting GCSE options we recommend that you make your choices based on your own interests and future goals.

Choosing a course based on your own passions shows confidence, maturity, independence and direction, qualities we strive to develop in all our students and attributes which will be highly prized by future employers and higher education providers.

**Your choices shape your future, so make sure that they are right for you. Be confident in your own path; don't chase anyone else's dream.**

Equally, it is important to not choose courses based on teacher preferences. The teachers teaching you next year may not be those you currently have.



# CAREERS

Expert careers guidance is part of our seven year journey here at The Hinckley School, allowing our students to raise their aspirations and be supported to explore destinations they may never have considered before. Our intent is for our students to become agents of change in the world, so we are committed to support, guidance and advice to nurture their confidence, independence and ability to make well informed, realistic and aspirational decisions.

We strive to inspire and motivate our students in all year groups in order to fulfil their potential. The Hinckley School has an aspirational Careers Strategy underpinned by the Gatsby Benchmarks in order to help every student develop high aspirations and consider a broad and ambitious range of careers. In-line with the Gatsby Benchmarks, and in-line with our school ethos, 'Students First, It's About Learning, No Barriers', our advice is impartial and bespoke to each learner.

**“ THE CAREERS EVENINGS AT THE HINCKLEY SCHOOL ARE PHENOMENAL AND HAVE SIGNPOSTED BOTH MY CHILDREN TO MAKE EXCELLENT CHOICES. ”**  
- PARENT QUOTE

Students have already benefitted from our extensive Key Stage 3 careers programme. Delivered within the Personal Development curriculum during tutor time, our careers provision encourages students to consider their future plans and to discuss their aspirations and ambitions. If students already have a specific dream career in mind, then their choices should be shaped to achieve this goal. If students do not yet have a specific direction, please do not worry! Instead, choose a suite of subjects which will keep as many options open as possible.

As students enter Key Stage 4, it is important that careers education remains high profile as learners get ever closer to their future career and study opportunities. We build on the foundations laid in Key Stage 3 by providing an expert careers programme, ensuring that students leave us with not only outstanding results, but also with the knowledge, experience and confidence to make their dreams come true.

The Key Stage 4 Options Evening, Taster Sessions and supporting assemblies are designed to allow students to learn more about the courses available to them at The Hinckley School, linked to the wide variety of careers, industries and opportunities that studying each course presents. As students make these important decisions, our team of Tutors and Subject Leaders will be on hand to offer additional support. All students will also have the opportunity to take part in a one-to-one session with our in-house Careers Advisor. This is a fantastic opportunity for students to receive guidance from an experienced professional and to discuss their future plans in depth.

The Hinckley School provides a safe and secure environment where all students can flourish, where everyone is treated in a fair and consistent manner and all careers related information will be open to all students irrespective of context to ensure equal opportunities for all.

*For additional information and support please contact our Careers Advisor:  
Mrs H Thompson, Careers Advisor - [hthompson@thehinckleyschool.co.uk](mailto:hthompson@thehinckleyschool.co.uk)*





“

**OUR EXPERT CAREERS  
PROGRAMME ENSURES STUDENTS  
NOT ONLY LEAVE US WITH  
OUTSTANDING RESULTS, BUT ALSO  
WITH THE KNOWLEDGE AND  
EXPERIENCES TO MAKE THEIR  
DREAMS COME TRUE.**

**-CAREERS TEAM**

”



# SUPPORT & GUIDANCE

---

We encourage students to read the information provided for all courses - even if they haven't previously considered studying the subject - as the progression routes and course content may open up a new avenue of opportunity that they had not previously considered.

While considering their option choices we also encourage students to capitalise on the support available to them inside and outside of school, by speaking to their Pastoral Leader, Subject Teachers, Subject Leaders, Careers Team and Parents/Carers. All students and their families are also invited to attend our 'KS4 Options Evening' so that we can further support the decision making process.

## TIMELINE OF EVENTS

---

### **Key Stage 4 Options Evening - Tuesday 13th February 2024, 5pm-6:30pm**

The Options Evening will take place at The Hinckley School and will allow you to explore each option by talking to subject representatives. Further information will be sent to parents and carers in advance of the evening, and there will also be opportunities to meet with class teachers of English and Maths to discuss your child's progress so far this year. During the evening a series of talks led by Mr Wood, Deputy Headteacher, and Mr Fawcner, Assistant Headteacher, will share additional important information about the options process. The talk will be repeated at: 5:15pm, 5:45pm and 6:15pm.

### **Options Deadline - Monday 4th March**

This is the deadline for your final options choices to be submitted. This allows conversations to happen at home over half term and allows students and parents/carers further opportunities to ask questions when we return after the break. *Please note that we encourage option choices to be submitted prior to this date where possible, but options are **not** allocated on a first come, first served basis.*

### **If you have any enquiries please contact:**

Year 9 Hub Team: [Year9Hub@thehinckleyschool.co.uk](mailto:Year9Hub@thehinckleyschool.co.uk)

*The subject specification was correct at the time of printing. Please note that subject specifications can change at the discretion of the school. Every effort was made to ensure that the information contained in the Curriculum Guide was accurate at the time of publication. We will aim to run all courses described, but final decisions will be based on the number of students opting for each course.*

# NEXT STEPS

---

**The deadline to complete and submit your options is:  
Monday 4th March 2024**

## **The Options Process: Important Information**

- On Tuesday 13th February 2024 parents and carers of all Year 9 students will receive an email containing a link to the electronic options form and full instructions on how to complete the options process.
- Students must choose History or Geography from option block one and their other subjects from the remaining option blocks.
- Students will select their top three preferences from option blocks two and three.
- To allow students to study both History and Geography, Geography appears in option block one and option block three. Please note that Geography should not be selected twice. To study both History and Geography students should choose History in option block one and Geography in option block three.
- Students should only select to study either Sports Studies or GCSE Physical Education, these subjects cannot be studied together. Students should discuss with the PE department which course is most suitable for them.
- The online form should be submitted only once and should be completed by a parent or carer. The deadline for submitting options is Monday 4th March. If you make a mistake when submitting your form, please contact the Year 9 Hub Team.
- If you would prefer a paper copy, students can collect a paper form from the Year 9 office. Paper option forms should be returned to the Year 9 office before the deadline.
- We strongly advise that:
  - *If students have target grades in English and Maths of 5 or above, we encourage them to consider taking a modern foreign language to secure the EBacc route.*
  - *Taking the EBacc (English, Maths, Science, History or Geography and a modern foreign language) will enable students to access the highest academic routes, such as Russell Group universities, whilst ensuring they study a breadth of subjects.*
  - *Students wishing to take GCSE Computer Science should be very confident in Mathematics.*
  - *Students wishing to take GCSE PE or Music should carefully check the course requirements before choosing these subjects. It is advisable to also contact the relevant Head of Department.*

**If you have any questions, please access the support offered by your child's Year Leader and Careers Advisor, as we endeavor to help all our students to make the right choices for their brighter future.**







The Hinckley  
SCHOOL

## ***CORE SUBJECTS***

---

Core subjects are the cornerstones of a student's education and courses that all learners must study at Key Stage 4.

- **GCSE ENGLISH LANGUAGE**
- **GCSE ENGLISH LITERATURE**
- **GCSE MATHEMATICS**
- **GCSE SCIENCE**
- **PHYSICAL EDUCATION (NON-ASSESSED)**
- **PERSONAL DEVELOPMENT (NON-ASSESSED)**



# ENGLISH LANGUAGE

CORE

EBacc

**Qualification: GCSE**

**Exam Board/Specification: AQA**

There are two GCSE qualifications in English: English Language and English Literature. All students will study both GCSEs as most employers and colleges look for good grades in English and Maths.

Students will read a wide range of literature, across many time periods and from a diverse selection of writers. They will explore both fiction and non-fiction, developing their analysis skills in order to consider a writer's use of particular devices, to identify bias, and to place a text in its context. Students will become confident with identifying and using various literary devices, and consider the effects of the writers' choices carefully. They will be taught how to write for a range of audiences, both formal and informal, including newspaper reports, analytical essays, speeches and short stories.

## **What does the English Language course involve?**

Students will complete two examinations at the end of Year 11 that will test their reading and writing skills equally. They will be taught to confidently summarise, analyse, evaluate and compare both fiction and non-fiction texts, ranging from the 19<sup>th</sup> to the 21<sup>st</sup> century. Students will also be asked to demonstrate their skills in writing, in both creative and transactional pieces.

## **What about assessments and exams?**

The course is 100% examination.

**Exam 1:** Written paper: Explorations in Creative Reading and Writing  
1 hour, 45 minutes - Year 11 - 50% of assessment.

**Exam 2:** Written paper: Writers' Viewpoints and Perspectives  
1 hour, 45 minutes - Year 11 - 50% of assessment.

## **Progression opportunities (Sixth Form and beyond)**

You can study A Level courses at The Hinckley Sixth Form or other providers following your GCSE studies. English Language provides access to all pathways in Further and Higher education.



CORE

# ENGLISH LITERATURE

EBacc

**Qualification: GCSE**

**Exam Board/Specification: AQA**

There are two GCSE qualifications in English: English Language and English Literature. All students will study both GCSEs. Most employers and colleges look for good grades in English and Maths. Courses based on this specification encourage students to develop knowledge and skills in reading, writing and critical thinking. Through literature, students have a chance to develop culturally and acquire knowledge of the best that has been thought and written. Studying GCSE English Literature should encourage students to read widely for pleasure, and as a preparation for studying literature at a higher level.

## **What does the course involve?**

You will complete two examinations that focus on a wide variety of literature – a modern drama or prose, a 19th-century novel, a cluster of poetry and a Shakespeare play. You will also be asked to engage and respond to unseen poetry and drama in the exam.

## **What about assessments and exams?**

100% examination.

**Exam 1:** Written paper (1 hour, 45 minutes): Shakespeare and the 19th-century novel, to be taken at the end of Year 11 – 50% of assessment.

**Exam 2:** Written paper (2 hours, 15 minutes): Modern texts and poetry, to be taken at the end of Year 11 – 50% of assessment.

## **Progression opportunities (Sixth Form and beyond)**

You can take a number of A Level courses at The Hinckley Sixth Form or other providers following your GCSE studies. English Literature provides access to all pathways in Further and Higher education.

# MATHEMATICS

**Qualification: GCSE**

**Exam Board/Specification: Pearson**

## **What does the course involve?**

This linear course leads to a single GCSE qualification. In this course you will be taught knowledge, skills and understanding through mental and written calculations, discussion work, practical activities and solving problems.

CORE

STEM

EBacc

<b><u>Number</u></b> Working with numbers and the number system. Fractions, decimals and percentages. Measures and accuracy.	<b><u>Algebra</u></b> Expressions and equations. Sequences and linear functions. Graphical methods. Solving problems with algebra.	<b><u>Ratio, Proportion and Rates of Change</u></b> Use of scale factor. Divide or share in a specific ration. Compound measures (speed, density). Solve problems involving direct and inverse proportion.
<b><u>Statistics and Probability</u></b> The data handling cycle. Data collection. Data presentation and analysis. Data interpretation. Probability.	<b><u>Geometry and Measures</u></b> Properties of angles and shapes. Geometrical reasoning and calculation. Measures and construction. Mensuration and calculation.	

## **What about assessments and exams?**

100% examination.

### **Three Externally Assessed Exams:**

All 3 exam papers are one hour and 30 minutes.

All content is covered on each exam paper.

Each exam paper will have a range of questions.

Paper 1 is a non-calculator exam paper.

Paper 2 and Paper 3 allow the use of calculators.

### **Progression opportunities (Sixth Form and beyond)**

After completing your GCSE you will be able to move on to Level 3 to study A Level Mathematics and A Level Further Mathematics at The Hinckley Sixth Form or other providers. GCSE Mathematics also provides access to all pathways in Further and Higher education.

# SCIENCE

---

**Qualification: GCSE Combined Science**

**Exam Board/Specification: AQA**

CORE

STEM

EBacc

## **Is this course right for you?**

This course is for those students who do not wish to study extra Science (Triple Award Science) in years 10 and 11. This may be because Science is not their strongest or favourite subject, or because they prefer to study a wider range of subjects within their option choices. Students on the Combined Science course are still able to study the Science subjects in the Sixth Form and progress on to higher education Science courses or into Science-based careers. There are two tiers of entry: Higher and Foundation. Studying combined Science is part of the EBacc suite of subjects.

## **What does the course involve?**

You will study an equal mix of Biology, Chemistry and Physics disciplines across the two years. In lessons you will:

- Learn core scientific knowledge and the skills needed to apply it to different situations
- Carry out experiments and learn how to perform practical work accurately as well as how to report findings using the correct scientific method
- Research the latest scientific and technological developments and evaluate their benefits and drawbacks
- Look at how to select, organise and present information clearly using appropriate scientific terms

## **What about assessments and exams?**

100% examination. You will sit six examination papers in total (two in each of Biology, Chemistry and Physics). In addition you will carry out 21 Required Practical Activities (7 in Biology, 6 in Chemistry and 8 in Physics). Your understanding of these Required Practical Activities will be tested through written questions in the examinations.

## **Progression opportunities (Sixth Form and beyond)**

Students who thrive in Combined Science are well equipped to embark on A Levels in Biology, Chemistry or Physics at The Hinckley Sixth Form or other providers, and onto Science courses in further education or into Science based careers.



# PHYSICAL EDUCATION

---

## **Why is PE so important?**

Physical Education not only helps to improve fitness levels, it also teaches students about healthy lifestyles. Lessons ensure students develop confidence and improve social skills such as communication and team work through fun interactive activities, many of which students go on to explore through extra curricular sessions and enjoy as life long hobbies. This pathway is not assessed, it is purely for health benefits and enjoyment.

## **What does the course involve?**

Students will get to enjoy participating in a wide variety of activities including:

**Football**

**American Football**

**Netball**

**Badminton**

**Trampolining**

**Fitness**

**Circuits**

**Athletics**

**Boxercise**

**Basketball**

**Yoga**

**Ultimate**

## **Do I have to do PE if I don't like sport?**

Yes. There are many different activities for you to try between multiple disciplines, but all aimed at creating a breadth in which you will hopefully find an activity to carry on with in the future and help promote and/or maintain a healthy lifestyle. Participation in sporting activities promotes mental as well as physical health.

## **What will we do?**

A wide variety of activities, some competitive, some recreational, indoor and outdoor, class and fitness based sessions. There is something for everyone.

## **Can I come to extra-curricular clubs?**

Everyone is welcome to attend the many extra-curricular clubs and teams that are run at The Hinckley School, both at lunch time and after school. Displays on the PE noticeboards and our regular enrichment flyers give details of all activities, clubs and teams on offer.

## **What happens if I am injured?**

If you are unable to take part in a normal lesson you will be asked to take an active role in coaching or officiating within the lesson. A note from parents or carers is needed to validate injury or illness.

## PERSONAL DEVELOPMENT

---

This non-assessed course is for everyone and is part of the Personal Development curriculum alongside tutor programmes and assemblies. It is an opportunity to focus on personal development and to prepare for the local and wider community.

Personal Development is a mandatory requirement and all students take part in Personal Development lessons. It is a time to focus on you, your well-being, your future goals and how to deal with the many challenges that life throws at us. You will develop your interpersonal skills and understanding of matters that affect your life within school and beyond. You will be given the knowledge, skills and support to help you to achieve academically and to make informed choices in your personal life. This course is based around 'Talking Points' where you will have the opportunity to discuss and debate many key topics.

Developing communication skills is vital in all aspects of your present and future life. Personal Development sessions will be underpinned by the development of formal communication, which will have a positive impact on the rest of the curriculum and life beyond school.

### **What does the course involve?**

The Personal Development programme is delivered through the three strands of:

- Living in and contributing to the wider world
- Being a productive citizen
- Living a safe and healthy life

Personal Development also incorporates the compulsory requirements of Relationship, Sex and Health (RSHE) education, as well as Careers education.

### **What about assessments and exams?**

There are no exams. Your progress will be shown by your participation in Talking Points.

The Learning Journey will show the endpoints you are achieving by the end of KS4, as part of your seven year journey.

### **Progression opportunities**

Personal Development links to many other subject areas, including Science, Law, Politics, Geography, History, Philosophy and Ethics, Sociology, Economics and Business Studies. It also encourages you to become an inspirational role model.





The Hinckley  
SCHOOL

# OPTION BLOCK 1

---

- GCSE GEOGRAPHY
- GCSE HISTORY

EST: 1629

**Qualification: GCSE**

**Exam Board/Specification: AQA**

*Please note: You can only choose Geography in Option Block 1 or 3, not both.*

The GCSE Course will provide you with a clear overall view of the world in the first part of the twenty first century. You will study a wide range of physical and human geography topics which will allow you to develop an understanding of global citizenship and a sense of place and appreciation of the environment.

### **This course is for you if:**

- You enjoy participating in discussions and debates.
- You would like to acquire skills and techniques to conduct a Geographical enquiry.
- You would like to acquire knowledge and understanding of a range of places from local to global.
- You would like to learn how to communicate your ideas and opinions.

### **What does the course involve?**

#### **Living with the Physical Environment**

**Section A Challenge of Natural Hazards** (tectonic, tropical storms, extreme weather in the UK, climate change).

**Section B The Living World** (ecosystems, tropical rainforests, one from: hot deserts and cold environments).

**Section C Physical Landscapes in the UK** (two from: coastal landscapes, river landscapes, glacial landscapes).

#### **Challenge in the Human Environment**

**Section A Urban issues and challenge**

**Section B The changing economic world**

**Section C The challenge of resource management** (one from: food, water, energy).

#### **Geographical Applications**

**Section A Issues evaluation** – using pre-release material.

**Section B Fieldwork**

### **What about assessments and exams?**

100% examination. Both physical and human geography examinations are at the end of Year 11, both are one hour and 30 minutes long and each is worth 35% of the GCSE. Geographical applications involving questions related to local fieldwork and pre-release material are examined in a one-hour paper and accounts for 30% of the GCSE grade.

### **Progression opportunities (Sixth Form and beyond)**

The GCSE enables you to gain a better understanding of the world and the major issues affecting it today. It lays an appropriate foundation for further study of Geography or related subjects at The Hinckley Sixth Form and other providers including apprenticeships, college courses and places of work. In addition, it provides you with a diverse background in terms of general education and lifelong learning.

Geography is highly regarded by employers as it shows that you have developed a good knowledge base and are proficient at learning skills. Universities are prepared to count Geography as a Science or as a Humanities subject, making it flexible and a very useful qualification.



**Qualification: GCSE**

**Exam Board/Specification: Pearson Edexcel**

**“WE ARE NOT MAKERS OF HISTORY. WE ARE MADE BY HISTORY.”**  
*Martin Luther King Jr*

If you constantly ask ‘**Why?**’ this is the course for you. History is key to understanding **why** we live like we do, **why** our country is run like it is, **why** we have the laws and freedoms we do and **why** people and countries across the world are so different. It teaches us to look for evidence to support what we say and challenges us to look beyond our communities into the wider world. We will see similarities and differences and be able to make links and track changes. It will show us the creation of the 21st Century world we live in. Think of the news at the moment; Why is there war in Ukraine? Why is there conflict in Israel and Palestine? These questions are explained by history.

### **Is the course right for you?**

History develops an important skillset for any career - how to analyse, evaluate, research, communicate your ideas, make decisions and justify them. You will build knowledge about a variety of periods, people and events from 1250 to the modern day.

You’re well prepared! Our Key Stage 3 work has equipped you well for the challenge of GCSE - you will find you have the basic skills needed already, and background knowledge of many of the topics we study.



### **What does the course involve?**

The course will give you a broad understanding of aspects of British History from Medieval times to the present day. You’ll also study the making of modern America and key turning points of the 20th Century.

#### **1: Medicine in Britain, c.1250—present**

**The British Sector of the Western Front, 1914-18:  
Injuries, treatment and trenches.**

#### **2: Henry VIII and his ministers, 1509–40**

**The American West, c.1835–c1895**

#### **3: Weimar and Nazi Germany, 1918 to 1939**



### **What about assessments and exams?**

100% examination – three examination papers are taken at the end of Year 11. You will be well prepared for these through engaging and challenging lessons, an extensive revision programme and individually focussed intervention sessions.

### **Progression opportunities (Sixth Form and beyond)**

If you are considering working in law, politics, journalism, the Civil Service or education, History GCSE is a great platform to start your career and higher study. It can also lead into careers such as archaeology and of course, teaching.

Thinking about Science or ADT careers? Medicine? Sports Psychology? Graphic Design? Textiles? History GCSE is useful for those of you going into the Sciences or Arts too. You will develop the ability to look at information, put it into context, make sense of it and explain it to others. Any degree course or research job would look favourably at a History GCSE on your CV – it tells prospective employers you have a lot of skills.



The Hinckley  
SCHOOL

# OPTION BLOCK 2

---

- **GCSE FRENCH**
- **GCSE SPANISH**
- **GCSE COMPUTER SCIENCE**
- **GCSE ETHICS & PHILOSOPHY (RELIGIOUS EDUCATION)**
- **GCSE MUSIC**
- **GCSE DRAMA**
- **VOCATIONAL AWARD - HOSPITALITY & CATERING**
- **CAMBRIDGE NATIONAL - SPORTS STUDIES**



# MFL: FRENCH

**Qualification: GCSE**

**Exam Board/Specification: AQA**

French GCSE is a qualification in the French language for students who have prior knowledge of French and would like to get to GCSE standard in two years.

## Is this course right for you?

This course enables you to develop your French language skills, equipping you with the knowledge to communicate in a variety of contexts with confidence. You will develop your literacy, ability to communicate and share information, logical thought patterns and understanding of how language works.

## What does the course involve?

In this course you will learn how to:

- Understand general and specific information from different types of spoken language.
- Communicate and interact effectively through spoken language for a variety of purposes across a range of specified context.
- Understand and respond to different types of written language as well as developing cultural knowledge.
- Communicate effectively in writing for a variety of purposes from e-mails to short essays, including translation.

Skill	Assessment	Weighting
<b>Listening</b> Listen for and note main points from a spoken text	Written examination in June of Year 11	25%
<b>Speaking</b> Communicate and interact effectively in speech for a variety of purposes	Spoken examination in April/May of Year 11	25%
<b>Reading</b> Read, identify and note main points from a written text (e.g. adverts, newspaper and magazine articles, and literary texts)	Written examination in June of Year 11	25%
<b>Writing</b> Written tasks for a variety of purposes and in a range of contexts	Written examination in June of Year 11	25%

## What about assessments and exams?

The subject is examined in two tiers (Foundation or Higher) for all four skills. The final GCSE grade awarded is dependent upon your tier of entry. GCSE grades from 9-1 will be awarded.

## Progression opportunities (Sixth Form and beyond)

You can go on to study French A Level. Any language qualification you pass at Level 2 and above will support you in your future, whatever you decide to do. Languages show universities and employers that you can think logically and study hard, but also pay attention to detail, as well as your interest and competence in another language. It always looks good on your CV to have completed and gained a language qualification, as it complements any type of career but with an international edge.

# MFL: SPANISH

**Qualification:** GCSE

**Exam Board/Specification:** AQA

Spanish GCSE is suitable for students who have prior knowledge of Spanish and would like to get to GCSE standard by the end of Year 11.

## Is this course right for you?

This course enables you to develop your Spanish language skills, equipping you with the knowledge to communicate in a variety of contexts with confidence. You will develop your literacy, ability to communicate and share information, logical thought patterns and your understanding of how the language works, as well as your own.

## What does the course involve?

In the course you will learn how to:

- Understand general and specific information from different types of spoken language.
- Communicate and interact effectively through spoken language for a variety of purposes across a range of specified context.
- Understand and respond to different types of written language as well as developing cultural knowledge.
- Communicate effectively in writing for a variety of purposes from e-mails to short essays, including translation.

Skill	Assessment	Weighting
<b>Listening</b> Listen for and note main points from a spoken text	Written examination in June of Year 11	25%
<b>Speaking</b> Communicate and interact effectively in speech for a variety of purposes	Spoken examination in April/May of Year 11	25%
<b>Reading</b> Read, identify and note main points from a written text (e.g. adverts, newspaper and magazine articles, and literary texts)	Written examination in June of Year 11	25%
<b>Writing</b> Written tasks for a variety of purposes and in a range of contexts	Written examination in June of Year 11	25%

## What about assessments and exams?

The subject is examined in two tiers (Foundation or Higher) for all four skills. The final GCSE grade awarded is dependent upon your tier of entry. GCSE grades from 9-1 will be awarded.

## Progression opportunities (Sixth Form and beyond)

Any language qualification you pass at Level 2 and above will support you in your future, whatever you decide to do. Languages show universities and employers that you can think logically and study hard, but also pay attention to detail, as well as competence in another language. It always looks good on your CV to have completed and gained a language qualification as it complements any type of career but with an international edge.



# COMPUTER SCIENCE

**Qualification:** GCSE  
**Exam Board/Specification:** OCR

## Is this course right for you?

The GCSE in Computer Science is engaging and practical, encouraging creativity and problem solving. It encourages students to develop their understanding and application of the core concepts in Computer Science. Students also analyse problems in computational terms and devise creative solutions by designing, writing, testing and evaluating programs.

## What does the course involve?

The specification focuses on:

- Computational thinking as its core, helping students to develop the skills to solve problems, design systems and understand human and machine intelligence.
- Applying the academic principles they learn in the classroom to real-world systems in an exciting and engaging way.
- Giving students a clear progression into higher education, as the course was designed after consultation with members of BCS, CAS and top universities.

## What about assessments and exams?

The course comprises of two components and a practical programming task. Both components will be assessed by their own 1 hour 30 minute paper.

The components are described below:

### Component 01: Computer systems

Introduces students to the central processing unit (CPU), computer memory and storage, data representation, wired and wireless networks, network topologies, system security and system software. It also looks at ethical, legal, cultural and environmental concerns associated with computer science.

### Component 02: Computational thinking, algorithms and programming

Students apply knowledge and understanding gained in component 01. They develop skills and understanding in computational thinking: algorithms, programming techniques, producing robust programs, computational logic and translators.

### Practical programming

Students are to be given the opportunity to undertake programming tasks during their course of study which allows them to develop their skills to design, write, test and refine programs using a high-level programming language. Students will be assessed on these skills during the written examinations, in particular component 02.

### Progression opportunities (Sixth Form and beyond)

The successful completion of the course will lead well into numerous Computer Science studies in sixth form, at university and beyond. The skills you will acquire are highly sought after in the workplace and lead into many specialised job sectors.

# ETHICS & PHILOSOPHY (RE)

---

**Qualification:** GCSE

**Exam Board/Specification:** AQA

The Ethics & Philosophy (Religious Education) course will provide you with an understanding of many of the interesting issues faced by society today. You will study, evaluate and analyse different topics that will affect you throughout your life. It will provide you with an opportunity to develop your own views and to consider those of others. You will learn to argue your case whilst presenting a reasoned argument on many social and moral issues.

## **Is this course right for you?**

This course is for you if:

- You are enthusiastic and interested in the big questions of life and relevant moral issues.
- You would like to develop your own knowledge and understanding of different beliefs, values and traditions.
- You would like to learn how to communicate your ideas and opinions on ethics and moral issues.
- You would enjoy participating in discussions and debates.
- You would like to learn how to use written communication effectively.

## **What does the course involve?**

You will study a range of topics including:

- Early life issues e.g. abortion.
- Issues surrounding prejudice and discrimination.
- Planet Earth – What's the future?
- Belief and behaviour – How does one impact the other?
- The existence of God – Any evidence?
- The problem of evil – Why?
- Religious and non-religious beliefs and practices.
- Science and religion – Compatible or opposed?
- The afterlife – Is there one? What might it be like?

## **What about assessments and exams?**

100% examination. Examinations are at the end of Year 11.

## **Progression opportunities (Sixth Form and beyond)**

Ethics & Philosophy (RE) helps you to have an awareness of the world around you. The subject is not only interesting and relevant but allows you the freedom to develop your own points of view. During the GCSE course you will develop many skills which will allow you to go on to study A Level subjects such as Psychology, Sociology, Law and Politics. It is a subject that is also looked on favourably by places of higher education and employers. Ethics and Philosophy offers the opportunity for progression into many occupations including – Medicine, Teaching, Law, Social Work, Civil Service, Management and the Police Force.

# MUSIC

---

**Qualification: GCSE**

**Exam Board/Specification: OCR**

## **Is this course right for you?**

Are you an aspiring musician, singer, instrumentalist, or songwriter? Are you keen to learn about different musical styles? Are you committed to building your instrumental skills? Keen to develop your composing skills? Then this course is for you!

We use state-of-the-art technology alongside your instruments during this course. It would be an advantage if you have been learning an instrument for a year or two before considering this course.

The course is based on:

**Performance** - 30% is based on a solo performance on your instrument/ voice, as well as an ensemble performance. If you wish to not perform, you can do sequencing where you recreate a pre-existing song on Logic Pro.

**Composition** - 30% is based on a free composition of your choice, and a composition set out with a brief, provided by OCR. Logic Pro or Sibelius can be used here.

**Listening & Appraising** - 40% is a listening exam comprising of film music, popular music, world music, and classical music. The exam is a 1 hour 30 minute written paper, with a CD.

## **What does the course involve?**

There is a mixture of theory lessons, composition and practical lessons. You will be working:

- By yourself: for composing and for some performing activities.
- In groups: for some performing, and for some listening activities.
- Occasionally as a whole class.

## **What about assessments and exams?**

### Assessments:

- Two compositions: one is free reign, and the other is with a starting point from OCR.
- Two performances: one is a solo, and the other is ensemble. There is also an option to substitute one or two of these for sequencing — where you recreate a pre-existing song on Logic Pro.

### Exam

Final exam: written paper as a listening Examination.

## **Progression opportunities (Sixth Form and beyond)**

Music is an enormous industry, one of the biggest in the world! This course leads directly to the study of music at a higher level, including A Level and BTEC. You may then opt for a specialist degree course at university or a music college. Alternatively, this course could be used to access Level 2 or Level 3 Music courses at a further education college. Music may not be a future aspiration, but the skills harnessed in this course are invaluable post-education: creativity, innovation, confidence, problem solving and self-expression.



# DRAMA

---

**Qualification:** GCSE

**Exam Board/Specification:** OCR

Drama is a powerful and expressive subject which encourages you to develop your creative, physical, emotional and intellectual capacity, whatever your previous experience in the subject.

## **Is this course right for you?**

This course will be right for you if you enjoy devising, designing and performing and have an appreciation of all aspects of the drama process including watching and evaluating. The course is for students who would like to develop different styles of performance, through lessons and outside workshops. You will analyse plays and drama practitioners, applying your experiences and techniques as well as writing about plays, seeing live theatre and writing a live theatre review for the written exam component of the course.

## **What does the course involve?**

- Performance** – You will develop and apply the knowledge, understanding and skills required to perform drama on your own and in a group.
- Devising** – You will develop your ability to create and structure drama material, based up on a stimulus.
- Appreciation** – You will develop your ability to use written communication, using appropriate terminology to critically appreciate your own work, study published plays and to experience live theatre and write about it.

## **What about assessments and exams?**

**Unit 1: Devising Theatre (30%)** Students will participate in the creation, development and performance of a piece of devised theatre. Students must produce a realisation of their piece of devised theatre (performance) and a written portfolio to accompany and support the performance.

**Unit 2: Performing from a Text – (30%)** Students will be assessed on either acting or design. Students study two extracts from the same performance text and perform two scenes to an external examiner.

A written evaluation of the process.

## **Unit 3 – Interpreting Theatre (40%)**

Written exam:

Section A - A series of short and longer questions on one set text 'Blood Brothers'.

Section B – Live theatre Review - requiring analysis and evaluation of a given aspect of a live theatre production seen during the course.

## **Progression opportunities (Sixth Form and beyond)**

Drama is an indicator of confidence, shows the ability to work as a team and displays creativity within a work environment. This subject holds significant life skills as well as the academic investment. Moreover, students with a variety of GCSEs are desirable to sixth forms and colleges as they demonstrate a well-rounded student. Drama at GCSE is an excellent transition into A Level Performing Arts courses and related Performing Arts College courses. Drama GCSE could also lead to a career in the Performing Arts industries.

# HOSPITALITY & CATERING

**Qualification: Level 1/2 Vocational Award in Hospitality & Catering (Technical Award)**

**Exam Board/Specification: WJEC/Eduqas**

## **Is this course right for you?**

Ever wondered what it takes to work in a top hotel or restaurant? Does food and discovering new flavours in the kitchen inspire you? Maybe you're interested in developing the skills you need to work front of house? If so, it's time to find out more about this exciting qualification. You will develop a range of skills which are attractive to employers, colleges and universities including: communication; confidence; learning independently; organisation; problem solving; research; self-discipline; stamina; taking on responsibility; time management.

## **What does the course involve?**

### **Unit 1: The Hospitality and Catering Industry**

You will:

- Learn about the hospitality and catering industry, the types of hospitality and catering providers and about working in the industry.
- Learn about health and safety, and food safety in hospitality and catering, as well as food related causes of ill health.

### **Unit 2: Hospitality and Catering in Action**

You will:

- Learn about the importance of nutrition and how cooking methods can impact on nutritional value.
- Learn how to plan nutritious menus as well as factors which affect menu planning. You will learn the skills and techniques needed to prepare, cook and present dishes as well as learning how to review your work effectively.

## **What about assessments and exams?**

You will be assessed through a written examination and an assignment. Unit 1 will be assessed through an exam, which is worth 40% of your qualification. In Unit 2 you will complete an assignment where you will plan and prepare a menu in response to a brief. This will be worth 60% of your qualification and will take 12 hours.

## **Progression opportunities (Sixth Form and beyond)**

Following completion of this course, you will be qualified to go on to further study the Hospitality and Catering Industry in a vocational setting. Equally you will be able to embark on an apprenticeship or full time career in the catering or food industries.

# SPORTS STUDIES

---

**Qualification: Cambridge National Level 2**  
**Exam Board/Specification: OCR**

*Please note: You cannot choose this option and  
GCSE Physical Education*

An ideal course for students who want to have a more practically based learning experience to that of GCSE PE. Sports Studies incorporates practical skills in team and individual sports with the opportunity to develop sports leadership and officiating skills and to study contemporary sporting issues and the media.

## **Is this course right for you?**

In order to be successful on the course you will:

- Want to improve your leadership skills.
- Be actively involved in sport at school and at other clubs/centres.
- Want to learn how to officiate effectively.
- Want to sit a formal GCSE exam in January of Year 11.

## **What does the course involve?**

The course involves one exam in Year 11 with the option to retake and two centre assessed units with outcome moderation from the OCR.

## **What about assessments and exams?**

### **R184: Contemporary issues in sport (x1 Exam)**

Students explore a range of topical and contemporary issues in sport, such as participation levels and barriers, promoting values and ethical behaviour, and how sport contributes to society as a whole beyond simply providing entertainment.

### **R185: Developing sports skills and leadership (x2 Sports)**

Students try out a range of sports-related skills and techniques, including different practice methods for improving both their own performance and that of others. They develop their knowledge of the use of tactics and strategies in both individual and team sporting activities as well as their understanding of the rules, enabling them to carry out a number of officiating roles within the activities. Students learn about some of the knowledge, understanding and practical skills required to be an effective sport leader. They put their knowledge into practice by planning and delivering safe and effective sporting activity sessions. Afterwards they review their performance.

### **R186: Sport and the media (Coursework)**

Students explore the relationship between sports and the media: how sport uses the media to promote itself and how the media uses sport to expand and maintain uptake of its products. They look at the differences in sports coverage across a range of media outlets and over time and the effect that media has had on public interest and involvement in sport.

## **Progression opportunities (Sixth Form and beyond)**

Ideal preparation for the BTEC Level 3 Sport course or first steps into coaching, leadership and officiating awards. The course will provide the relevant skills and subject content for students to choose a variety of careers or degree options ranging from sport science, sports coaching, sport management, sports theory, sports nutrition or sports psychology, to name a few.





The Hinckley  
SCHOOL

# OPTION BLOCK 3

---

- **GCSE TRIPLE SCIENCE**
- **GCSE PHYSICAL EDUCATION**
- **GCSE GEOGRAPHY**
- **GCSE ART, CRAFT & DESIGN**
- **BTEC HEALTH & SOCIAL CARE**
- **GCSE MEDIA STUDIES**
- **CAMBRIDGE NATIONAL - ENGINEERING DESIGN**
- **GCSE TEXTILES**

# SCIENCE TRIPLE:

## BIOLOGY, CHEMISTRY & PHYSICS

---

STEM

EBacc

### Qualifications:

GCSE Biology  
GCSE Chemistry  
GCSE Physics

### Exam Board/Specification:

AQA

Triple Science constitutes one option choice. You will study Triple Science in Core Combined Science time and in one option block. If you opt to study Triple Science you will follow separate Biology, Chemistry and Physics GCSE courses throughout KS4. This leads to three separate GCSEs. There are two tiers of entry: Higher and Foundation.

### Is this course right for you?

If you opt for Triple Science you should be enthusiastic about Science and enjoy practical work.

### What does the course involve?

Triple Science students study each of the three sciences; Biology, Chemistry and Physics in depth across the two GCSE years. In lessons you will:

- Learn core scientific knowledge and the skills needed to apply it to different situations.
- Carry out experiments and learn how to perform practical work accurately as well as how to report findings using the correct scientific method.
- Research the latest scientific and technological developments and evaluate their benefits and drawbacks.
- Look at how to select, organise and present information clearly using appropriate scientific terms.

### What about assessments and exams?

100% examination. You will sit two examination papers in each of GCSE Biology, GCSE Chemistry and GCSE Physics (6 examination papers in total). In addition, you will carry out between 8 -10 Required Practical Activities in each of the three Sciences (28 Required Practical Activities in total). Your understanding of these Required Practical Activities will be tested through written questions in the examinations.

### Progression opportunities (Sixth Form and beyond)

Students who thrive in Triple Science are well equipped to embark on A Levels in Biology, Chemistry or Physics at The Hinckley Sixth Form or other providers, and onto Science courses in further education or into Science based careers.

# PHYSICAL EDUCATION

**Qualification: GCSE**

**Exam Board/Specification: OCR**

Please note: You cannot choose this option and Sports Studies.

The GCSE Physical Education course will give you a good understanding of the principles behind sport and physical activity. You will cover a range of topics which will give you a greater understanding of how to lead a healthy, active lifestyle and maintain a healthy active body.

## **Is this course right for you?**

In order to be successful on the course you will:

- Enjoy practical Physical Education.
- Have a desire to learn about the human body in sport and exercise.
- Be actively involved in sport in school and at other clubs/centres.
- Have a keen interest in Science and in particular Biology.
- Take part in extra-curricular clubs and activities at school and/or at other clubs/centres.



## **What does the course involve?**

The course involves a combination of theory and practical lessons.

### **Theory -**

#### **Component 1**

*Physical factors affecting performance*

1.1 Applied Anatomy and Physiology

1.2 Physical Training

#### **Component 2**

*Socio-cultural Issues and Sport Psychology*

2.1 Socio Cultural Influences

2.2 Sports Psychology

2.3 Health, Fitness and Well-being

## **What about assessments and exams?**

**Practical performance** - You will be assessed on your practical ability in three different sports. This will include a range of skills and participating in a full sided game or event. Your practical performance will make up 30% of your final GCSE grade. You will be assessed in both a team sport and an individual sport so you must be actively involved in both team and individual sports.

**Final written exams** - The work you study within the theory sessions will be examined through two final exams in Year 11 which will be worth 60% of your final grade (30% per paper on component one and then component two).

**Analyse and evaluate performance** – As part of your practical assessment you will also have to produce written work based around the improvement of performance both in terms of skills and through fitness. This will make up 10% of your final grade. You will devise an action plan of how a skill could be improved through training (15 hours to complete final write up).

## **Progression opportunities (Sixth Form and beyond)**

As well as being the ideal preparation for the A Level Physical Education course, GCSE PE allows for progression to related vocational qualifications at The Hinckley Sixth Form or other providers.

The course will provide the relevant skills and subject content for students to choose a variety of careers or degree options ranging from sport science, sports coaching, sport management, sports theory, sports nutrition or sports psychology, to name a few.



*Please note: You can only choose Geography in Option Block 1 or 3, not both.*

**Qualification: GCSE**

**Exam Board/Specification: AQA**

The GCSE Course will provide you with a clear overall view of the world in the first part of the twenty first century. You will study a wide range of physical and human geography topics which will allow you to develop an understanding of global citizenship and a sense of place and appreciation of the environment.

### **This course is for you if:**

- You enjoy participating in discussions and debates.
- You would like to acquire skills and techniques to conduct a Geographical enquiry.
- You would like to acquire knowledge and understanding of a range of places from local to global.
- You would like to learn how to communicate your ideas and opinions.

### **What does the course involve?**

#### **Living with the Physical Environment**

**Section A Challenge of Natural Hazards** (tectonic, tropical storms, extreme weather in the UK, climate change).

**Section B The Living World** (ecosystems, tropical rainforests, one from: hot deserts and cold environments).

**Section C Physical Landscapes in the UK** (two from: coastal landscapes, river landscapes, glacial landscapes).

#### **Challenge in the Human Environment**

**Section A Urban issues and challenge**

**Section B The changing economic world**

**Section C The challenge of resource management** (one from: food, water, energy).

#### **Geographical Applications**

**Section A Issues evaluation** – using pre-release material.

**Section B Fieldwork**

### **What about assessments and exams?**

100% examination. Both physical and human geography examinations are at the end of Year 11, both are one hour and 30 minutes long and each is worth 35% of the GCSE. Geographical applications involving questions related to local fieldwork and pre-release material are examined in a one-hour paper and accounts for 30% of the GCSE grade.

### **Progression opportunities (Sixth Form and beyond)**

The GCSE enables you to gain a better understanding of the world and the major issues affecting it today. It lays an appropriate foundation for further study of Geography or related subjects at The Hinckley Sixth Form and other providers including apprenticeships, college courses and places of work. In addition, it provides you with a diverse background in terms of general education and lifelong learning.

Geography is highly regarded by employers as it shows that you have developed a good knowledge base and are proficient at learning skills. Universities are prepared to count Geography as a Science or as a Humanities subject, making it flexible and a very useful qualification.

# ART, CRAFT & DESIGN

**Qualification:** GCSE  
**Exam Board/Specification:** AQA

## Is this course right for you?

You must enter the course with a strong and confident ability to record and observe a variety of subjects with technical accuracy. This will allow you to record your initial ideas and intentions before spending time investigating a range of contextual sources to inform the creative exploration and application of a broad range of materials, techniques and processes that include; drawing and painting, photography and printmaking. As such you must be inquisitive and innovative in your sampling, demonstrating resilience and an ability to refine your work when obstacles are encountered. As well as producing visually and aesthetically pleasing results, challenge is demonstrated in ability to convey narrative through the selection of visual elements within each outcome and therefore you should strive to be a story teller through your art work.

Students can create their coursework through two or more of the following areas, with more confident students fusing together elements from each of these specialist areas:

**Fine Art** (Drawing, Painting & Printmaking) / **Photography** (Traditional, Digital, Editing & Digital Drawing)/ **Graphic Design and Illustration** (Advertising and Branding, Typography & Package Design) / **3D Design** (Ceramics, Architecture, & Jewellery Design)/ **Textiles** (Surface Pattern, Printing and Dyeing, Fashion Design & Illustration)

## What does the course involve?

You will work towards achieving this GCSE qualification by completing two extended units of coursework and one unit which is externally set and assessed by the exam board.

## Project themes include:

- Utopia & Dystopia (Landscapes and/ or Architecture)
- Literature (Portraiture and Figurative)

## What about assessments and exams?

All portfolio and externally set work is evaluated against four Assessment Objectives:

- |   |  |
|---|--|
| • AO1—Research<br>Researching and investigating | • AO3—Record<br>Drawing and Photography            |
| • AO2—Refine<br>Experimenting and Reflecting    | • AO4—Present<br>Outcomes and Visual Communication |

## What about assessments and exams?

### **Unit 1 Coursework 60%**

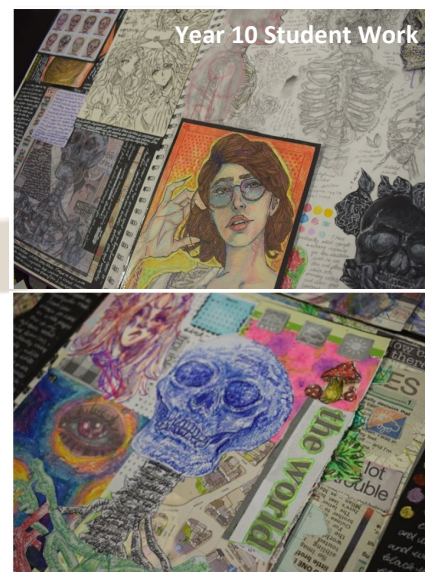
You will be taught how to use the assessment objectives to apply a methodical approach to the construction of a project, identifying suitable evidence and how it should be presented. You will also complete a range of practical workshops to introduce you to a diverse range of materials and techniques that can be utilised in up-coming projects and your externally set assignment.

### **Unit 2 Externally-set Assignment 40%**

You will be provided with a number of Starting Points (themes) by AQA to independently choose from. A preparatory period will enable you to investigate, generate and refine your ideas before producing a concluding final piece in a 10 hour controlled period.

## Progression opportunities (Sixth Form and beyond)

You will be able to progress to study A Level Art/ Photography at The Hinckley Sixth Form and other providers. Many of our students then embark on degree level courses in a broad range of areas including; media and journalism, communication and new technologies alongside other art and design courses. Employers and university admission tutors seek students who demonstrate transferrable skills including research, investigation, analysis, idea generation and reflection which are directly linked to the objectives and requirements of students who study our Art and Design course.



# HEALTH & SOCIAL CARE

---

**Qualification:** BTEC

**Exam Board/Specification:** Pearson

This is a BTEC Level 2 course that is equivalent to one GCSE but gets graded as Pass, Merit and Distinction. Students will study topics that are based on real life situations and where they will be able to draw upon their own experiences.

## **What does the course involve?**

This two-year course aims to give a broad understanding of the knowledge and skills that are essential when working with people. You will develop and sustain an interest in health, early years and education, social care, youth and community and issues that affect the care sector.

During the course you will learn about:

- Understanding human growth and development
- Life stages from birth to end of life
- Investigating how individuals deal with life events
- Recognising the different types of health care services
- Health care job roles and responsibilities
- Barriers to users accessing care
- Factors that affect health and well being
- Interpreting health indicators
- Demonstrating care values
- How to create a personal centred health and well being improvement plan

## **Is the course right for me?**

This course is right for you if:

- You are enthusiastic and interested in understanding how to professionally care for others
- You would like to develop your own knowledge and understanding of different life stages through growth and development
- You would like to learn how to communicate and demonstrate empathy
- You enjoy participating in discussions and debates
- You use written communication effectively
- You research tasks independently

## **What about assessments and exams?**

There are two assignments worth 60% completed in Year 10 and Year 11 and one examination worth 40%, sat in the summer of Year 11.

## **Progression opportunities (Sixth Form and beyond)**

You could gain employment within health pathways such as a Nurse, Nanny, Social and Health Care Worker, Care Assistant, Nursing Assistant, Paramedic and Child Care Worker, through an apprenticeship scheme after completing a Level 2 technical award. Alternatively, you could go onto further education with a Level 3 qualification which could take your journey via a university degree route to Medicine to become a Midwife, Occupation Therapist, Social worker, Radiologist or Radiographer.



# MEDIA STUDIES

---

**Qualification:** GCSE

**Exam Board/Specification:** Eduqas

## **Is this course right for you?**

*What is Media?* Media is about communication, particularly mass communication with lots of people. The media creates products that are designed to entertain and inform, created for lots of people to hear, watch or read, often simultaneously. Whenever you are watching television, streaming films, scrolling through social media or listening to a podcast, you are consuming media.

## **What does the course involve?**

As a GCSE Media Studies student, you will analyse how media products like TV programmes and music videos use images, sounds, language, and representations to create meaning.

You will learn about the media industry and how the industry affects how media products are made. You will investigate media audiences, exploring the people who watch, read and consume the products, and considering how different people might be affected by media products differently, and why.

You will study lots of different media forms, such as: Television, Online Media, Advertising and Marketing, Film Marketing, Magazines, Newspapers, Social and Participatory Media, Music Video, Radio, Video Games.

There is also a significant amount of practical work where you might create music videos, magazines, television programmes, advertisements and more.

## **What about assessments and exams?**

Assessment will consist of a mixture of examinations and non-examined assessment.

Component 1: Written examination: 1 hour 30mins, 40% of qualification

Component 2: Written examination: 1 hour 30mins, 30% of qualification

Component 3: Non-exam assessment (Coursework): Media Production, 30% of qualification.

## **Progression opportunities (Sixth Form and beyond)**

During the GCSE Media Studies course you'll develop and practise a range of skills which will equip you for progression to A Level study. They will also help you hugely in other areas such as Film, English, Humanities and Social Sciences. Looking further ahead, over one hundred universities offer courses in Media, Communications and Cultural Studies in the UK. An A Level qualification in Media Studies, informed by study at GCSE level, helps you to move towards these courses, as well as to those in a range of other areas. If university isn't for you, there is a huge array of career opportunities in the media, and it's an industry that is growing very quickly. If you are interested in the idea of a career in TV and film production, advertising, journalism, interactive media, and digital marketing, technical production, special effects, web design and post-production, then studying Media Studies at GCSE level is a great place to start.

# ENGINEERING DESIGN

**Qualification:** Level 1/2 Cambridge National Award in Engineering Design

**Exam Board/Specification:** OCR

## Is this course right for you?

Do you ever look around your home and think of handy products that could improve people's lives or get inspired by the amazing feats of engineering all around you? Are you creative, and want to start building the skills you need for a successful career in the industry? If so, it's time to uncover your potential.

Cambridge National in Engineering Design will inspire and equip you with the confidence to use skills that are relevant to the sector and the wider industry. It's a vocational qualification, equivalent in value to a GCSE and contains both practical and theoretical elements.

## What does the course involve?

As part of the Cambridge National, you'll cover:

- how designs are developed – including what information is needed and how manufacturing influences design
- communicating designs using sketches, drawings and computer aided design (CAD), producing accurate and detailed drawings and models
- how designers create and test models to make a working prototype
- making your own high-quality models to represent design ideas

## What about assessments and exams?

You will be assessed through a mixture of exam and set assignments.:

**Unit R038:** Principles of engineering design - 1 hour 15 minute written examination (48 GLH)

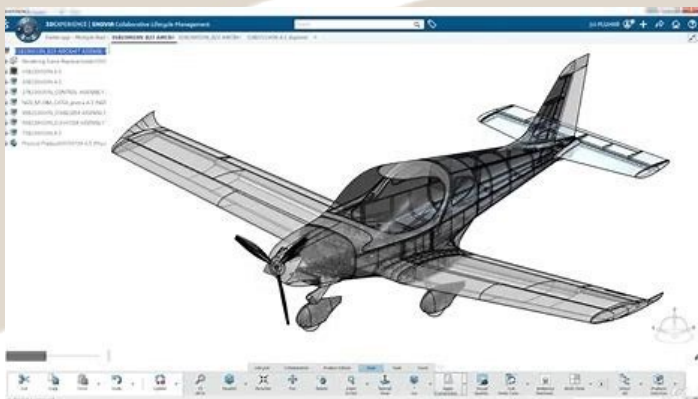
**Unit R039:** Communicating designs—OCR-set assignment, contains 4 practical tasks (36 GLH)

**Unit R040:** Design evaluation and modelling—OCR-set assignment, contains 6 practical tasks (36 GLH)

## Progression opportunities (Sixth Form and beyond)

By developing applied knowledge and practical skills, this course will help give you the opportunity to progress on to A Levels, a Cambridge Technical in Engineering, an apprenticeship or university.

The sky's the limit with Engineering Design – what about becoming an Aerospace Engineer?





# TEXTILES

**Qualification: GCSE Art and Design (Textile Design)**

**Exam Board: AQA**

## Is this course right for you?

You will spend time investigating a range of contextual sources (including textile artists and fashion designers) to inform the creative exploration and application of a broad range of materials, techniques and processes that include; embroidery, printmaking, surface pattern and creating textural and tactile qualities. As such you must be inquisitive and innovative in your sampling, demonstrating resilience and an ability to refine your work when obstacles are encountered. As well as producing visually and aesthetically pleasing results, challenge is demonstrated in ability to convey narrative through the selection of visual elements within each outcome and therefore you should strive to be a story teller through your work.

Students can create their coursework through one or more of the following areas:

- art textiles
- fashion design and illustration
- constructed textiles

This course is suitable for students who enjoy being artistic and creative yet prefer using textiles rather than other more traditional art based mediums or who would like to explore textiles further to progress onto a career in the fashion and textiles industry.

## What does the course involve?

You will work towards achieving this GCSE qualification by completing two extended units of coursework and one unit which is externally set and assessed by the exam board.

## Project themes include:

- Aquatics (Seascapes and Natural Forms)
- Structures
- Literature ('Curious and Curiouser' - Alice in Wonderland)
- Aquatic

## What about assessments and exams?

All portfolio and externally set work is evaluated against four Assessment Objectives:

- AO1—Research  
Researching and investigating
- AO2—Refine  
Experimenting and Reflecting
- AO3—Refine  
Experimenting and reviewing
- AO4—Present  
Final ideas and outcomes

## What about assessments and exams?

### **Unit 1 Coursework 60%**

You will be taught how to use the assessment objectives to apply a methodical approach to the construction of a project, identifying suitable evidence and how it should be presented. You will also complete a range of practical workshops to introduce you to a diverse range of materials and techniques that can be utilised in up-coming projects and your externally set assignment.

### **Unit 2 Externally-set Assignment 40%**

You will be provided with a number of Starting Points (themes) by AQA to independently choose from. A preparatory period will enable you to investigate, generate and refine your ideas before producing a concluding final piece in a 10 hour controlled period.

## Progression opportunities (Sixth Form and beyond)

You will be able to progress to study A Level Art & Design at The Hinckley Sixth Form and other providers. Many of our students then embark on degree level courses in a broad range of areas including; media and journalism, communication and new technologies alongside other art and design courses. Employers and university admission tutors seek students who demonstrate transferrable skills including research, investigation, analysis, idea generation and reflection which are directly linked to the objectives and requirements of students who study our Textiles course.





# MY NOTES...

---

*Use this blank page during the decision making process to write useful notes and to shortlist courses before making and submitting your final decision.*



**The deadline to complete and submit your options is:**  
**Monday 4th March 2024**